

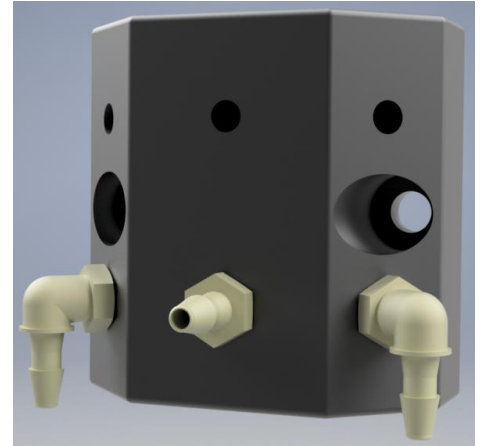
SELECTION BLOCK (2 PORTS) – Part No. A4605127S

Selection Block with 2 Ports and 1 Valve used in Colorimetric Analyzers

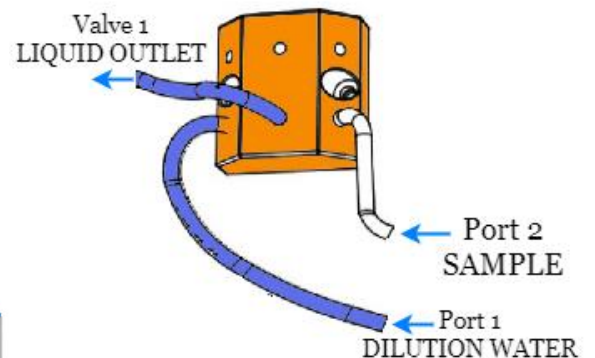
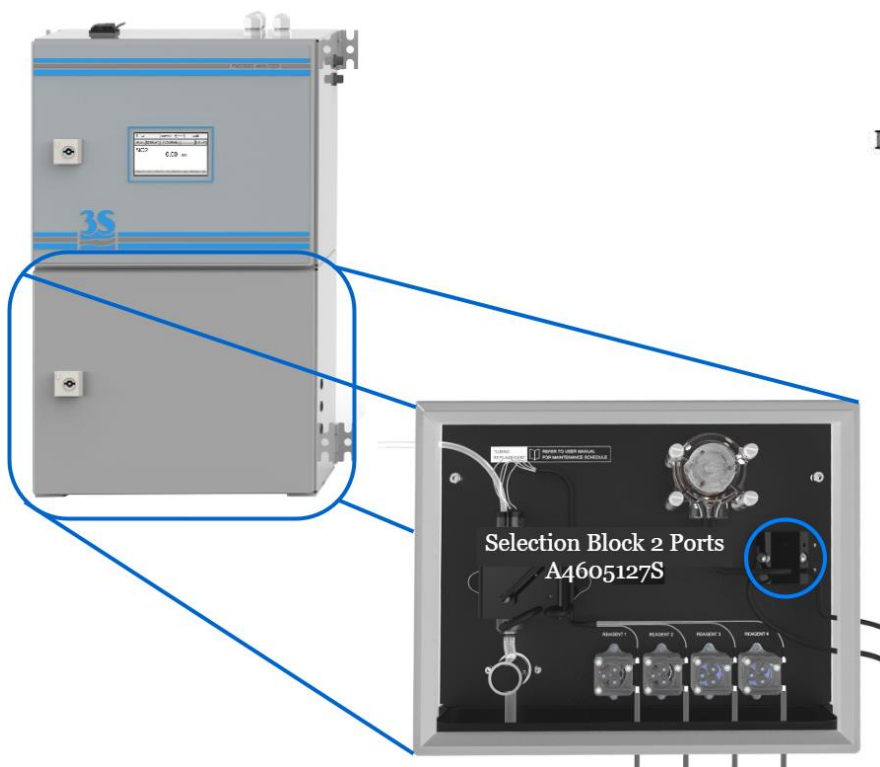
DESCRIPTION:

The Selection Block with 2 Ports and 1 Valve is a replacement/spare part for the colorimetric analyzers. This item is positioned on the right side of the hydraulic section as shown below.

The Selection Block with 2 Ports and 1 Valve allows for two different liquids to be configured. The two liquids can be configured as: (Dilution Water + Sample), (Sample 1 + Sample 2), (Sample + Cleaning Solution) or (Sample + Standard). The Selection Block consists of (1) valve, (2) Ports/Thread Barb Elbows and (1) Valve/Thread Barb Adapter as shown to the right.



Selection Block with
2 Ports and 1 Valve
P/N A4605127S



The Selection Block Dilution Water
in Port 1 and Sample in Port 2.