

3S-PC1000 Probe Controller

APPLICATION FIELDS

Various applications depending on installed probes.
Many different type of probes are available.

ADVANTAGES / FEATURES

• **Compact design, sturdy build**

Great responsiveness in a small volume, probes deliver rapid response in a minimal amount of space.
The stainless steel enclosure makes the analyzer resistant to corrosion even in the most harsh industrial conditions.

• **Low operating costs**

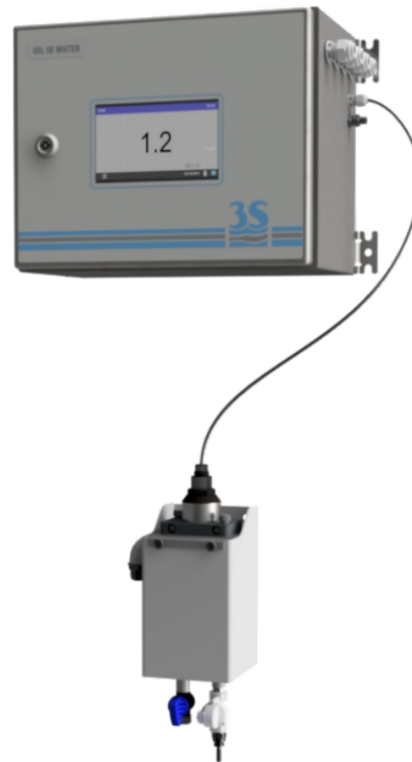
Minimum maintenance necessary: the 3S probes are equipped with automatic wiper to always keep the sensor window clean and responsive. No reagents needed.

• **Versatile, contemporaneous reading, up to two different probes**

The 3S-PC1000 can control two probes at the same time, with no extra delay. Different types of probes can be installed, covering all kind of applications.

• **Large color touchscreen**

The analyzer is equipped with a graphical touchscreen interface showing measured values and status information. Easy access to menus and functions. Integrated datalogger with USB download.



• **Easy to install, zero configuration**

The 3S-PC1000 can be quickly installed on a wall or inside a protective cabinet, together with the appropriate probe holder.

Installing new probes is as easy as attaching the connector to its socket. Probes are automatically recognized, no configuration required.

• **Many different probes and accessories**

All 3S probes are compatible with the controller. Many different parameters are available.

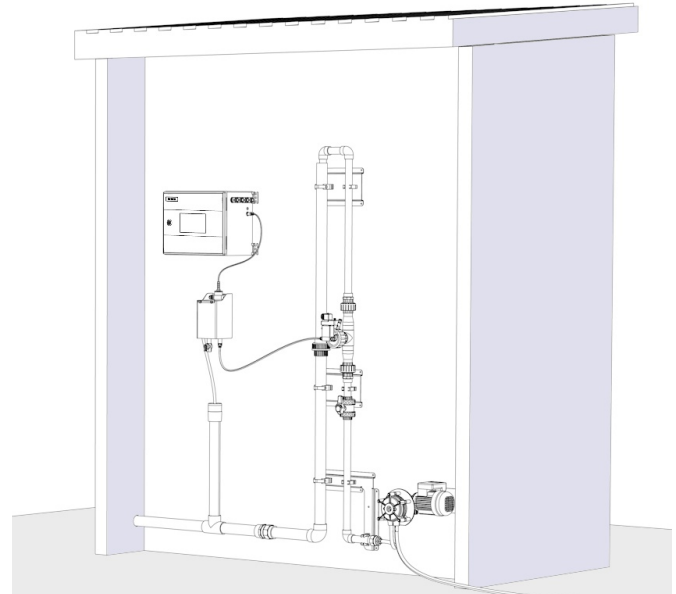
The system is completed with a series of accessories, from protective shelters to dedicated probe holder.

See relative documentation to discover more.

TECHNICAL SPECIFICATIONS

Measure principle	Various sensors available: hydrocarbons/oil-in-water, PAH/ PAC, COD, turbidity, chlorophyll, and others.
Number of channels (probes)	2
Analysis frequency	Continuous.
Power supply	110-230 VAC, 50/60 Hz, 80 VA
Temperature	5 - 45°C (41 - 113 °F)
Humidity	Max 85% RH
Case	Epoxy-coated stainless steel
Protection grade	IP65 (indoor only)
Mounting	Wall or rack mounting, in vertical position with fixing hinges
Dimensions	300 x 380 x 210 mm (11.8 x 14.8 x 8.3 in)
Weight	Approx. 10 Kg (22 lbs)
Output signals	Analog: 2 x 4-20 mA outputs Digital: ModBUS via Ethernet
Alarms	n. 4 NO relays for fault conditions and measure alarm
Datalogger	Integrated, with USB storage and download

INSTALLATION EXAMPLE

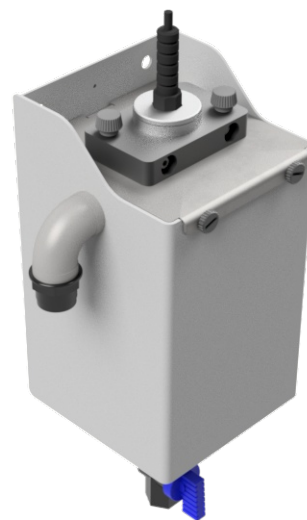


The analyzer is easily installed in a minimum amount of wall space.

In the picture are included the optional accessories:

- a) A46SF10020 - Filtration unit 100 micron 230 VAC (other mesh size and input voltages available)
- b) A46SPP0000 - Sampling Pump

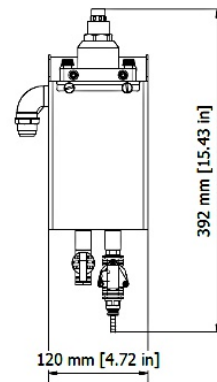
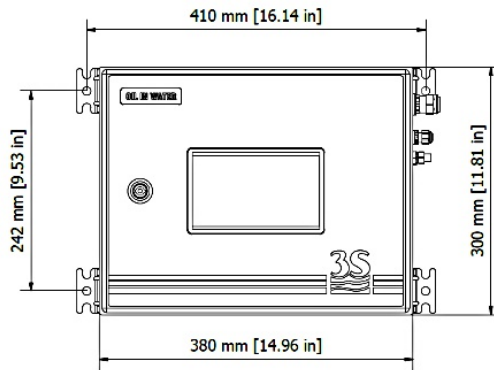
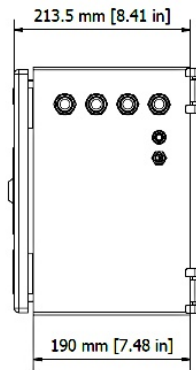
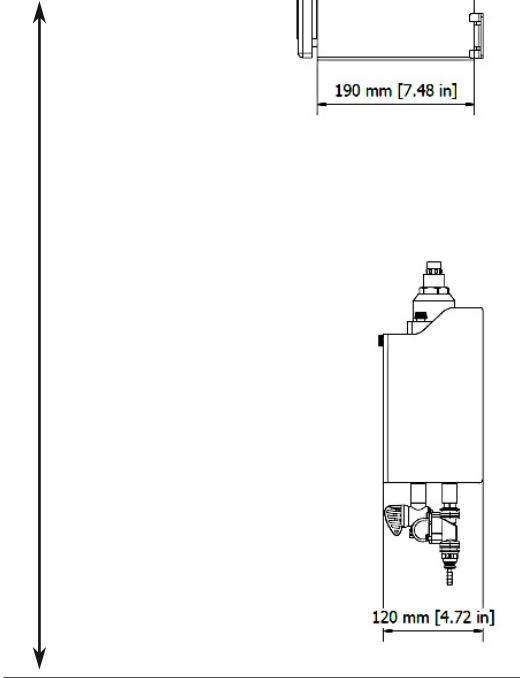
FAST LOOP RESERVOIR WITH PROBE



The probe is installed in the provided Fast Loop sample reservoir, protected from external light and easily accessible for cleaning and maintenance.

TECHNICAL DRAWINGS

160 cm
(eyes height)



PRODUCT CODES

- | | |
|-----------|--|
| A46U10000 | 3S-PC1000 PROBE CONTROLLER W/COLOR TOUCHSCREEN |
| A46UVSH | SUN RAIN SHIELD FOR UV TRANSMITTER |